

BLOWIN' IN THE WIND

Bob Dylan



1. How man - y roads must a man walk down be - fore you
2. How man - y years can a moun - tain ex - ist be - fore it's
3. How man - y times must a man look up be - fore he can



1. call him a man? Yes, 'n' How man - y seas must a white dove sail
2. washed to the sea? Yes, 'n' How man - y years can some peo - ple ex - ist
3. see the sky? Yes, 'n' How man - y ears must one man have



1. be - fore she sleeps in the sand? Yes, 'n' How man - y times must the
2. be - fore they're al - lowed to be - free? Yes, 'n' How man - y times can a
3. be - fore he can hear peo - ple cry? Yes, 'n' How man - y deaths will it



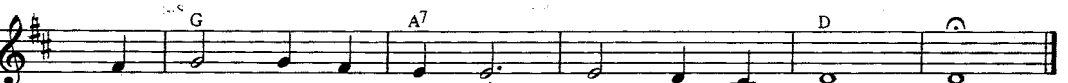
1. can - non balls fly be - fore they're for - e - ver banned?
2. man turn his head pre - ten - ding he just does - n't see?
3. take 'till he knows that too man - y peo - ple have died?



1-3. The an - swer, my friend, is blow - in' in the wind,



the an - swer is blow - in' in the wind. wind.



The an - swer is blow - in' in the wind.

BLACK ORPHEUS

Bossa

Louis Boufa

Handwritten musical score for "Black Orpheus" by Louis Boufa. The score is written on ten staves in 4/4 time. It includes a key signature of one sharp (F#) and a tempo marking of "Bossa". The music features a variety of chords including A-, B-7/b5, E7/b9, D-7, G7, Cmaj7, C#o7 (A7/b9), D-7, G7, C6, Fmaj7, B-7/b5, E7/b9, A-, B-7/b5, E7/b9, A-, B-7/b5, E7/b9, E-7/b5, A7/b9, D-, D-7/c, B-7/b5, E7/b9, A-, A-7/G, Fmaj7, B-7/b5, E7/b9, A-, and A-7. The score concludes with a double bar line and a final A- chord.

NIGHT AND DAY

Cole Porter

1 Dm7/b5 G7 C7j



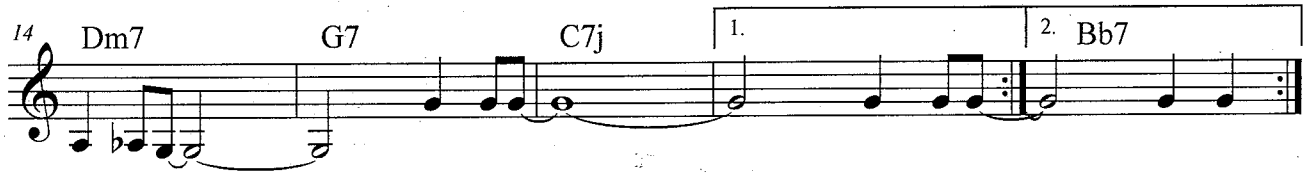
6 Dm7/b5 G7 C7j



10 F#m7/b5 Fm7 Em7 Ebo7



14 Dm7 G7 C7j 1. 2. Bb7



19 Eb7j C7j



23 Eb7j C7j



27 F#m7/b5 Fm7 Em7 Ebo7



31 Dm7 G7 C6 Dm7 G7

